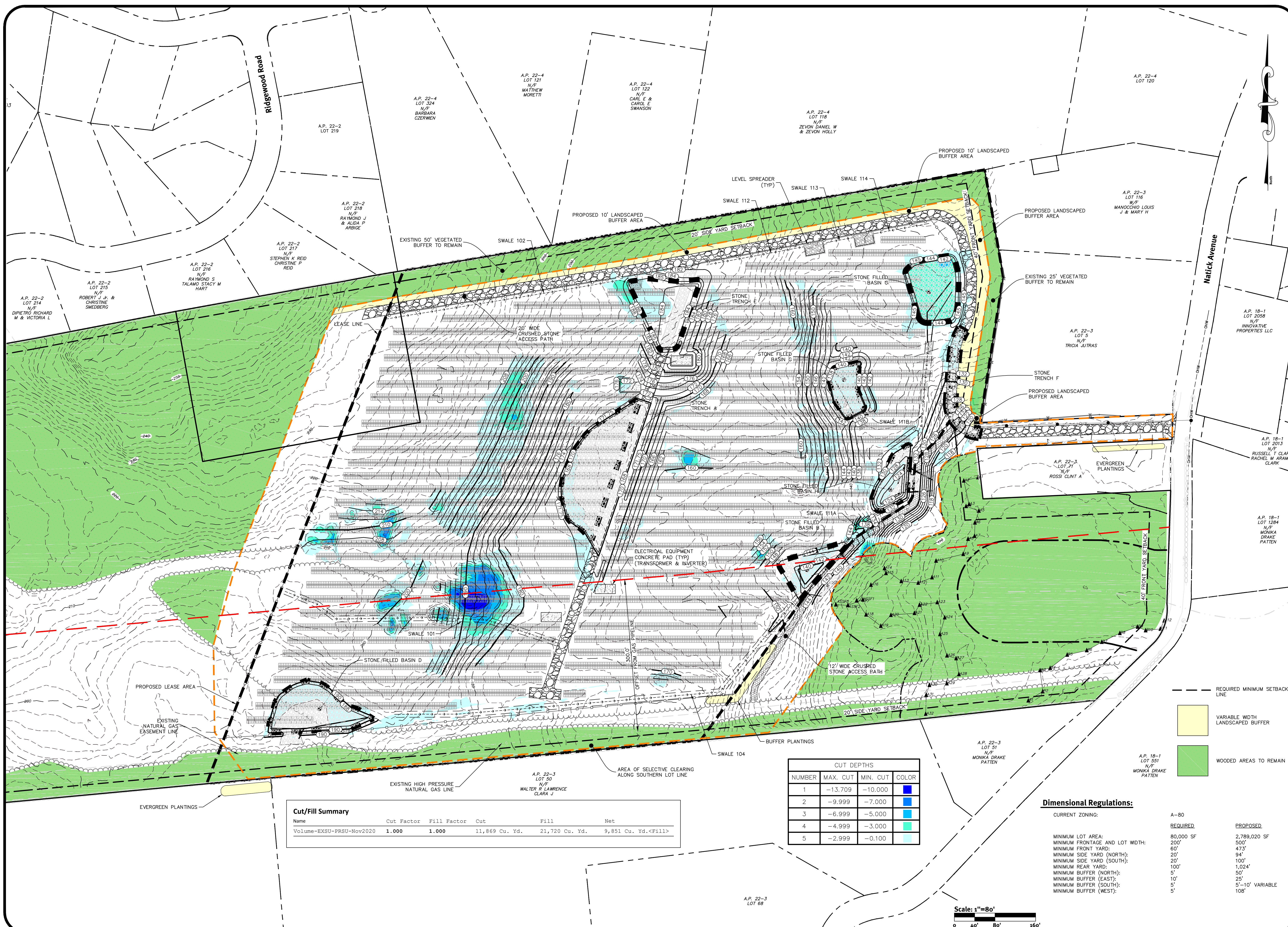


z:\demain\project\12437-015\_natick\_avenue\_solar\siteplan\cutfill.dwg Plotter: 12/29/2020



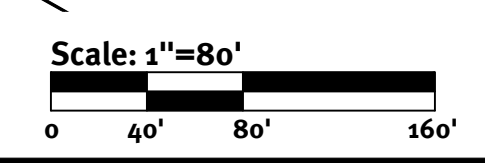
Cut/Fill Summary				
Name	Cut Factor	Fill Factor	Cut	Fill
Volume-EXSU-PRSU-Nov2020	1.000	1.000	11,869 Cu. Yd.	21,720 Cu. Yd.
			9,851 Cu. Yd.<Fill>	

CUT DEPTHS			
NUMBER	MAX. CUT	MIN. CUT	COLOR
1	-13.709	-10.000	Blue
2	-9.999	-7.000	Light Blue
3	-6.999	-5.000	Light Green
4	-4.999	-3.000	Light Yellow
5	-2.999	-0.100	Yellow

**Dimensional Regulations:**

CURRENT ZONING: A-80

	REQUIRED	PROPOSED
MINIMUM LOT AREA:	80,000 SF	2,789,020 SF
MINIMUM FRONTAGE AND LOT WIDTH:	60'	500'
MINIMUM FRONT YARD:	20'	473'
MINIMUM SIDE YARD (NORTH):	20'	94'
MINIMUM SIDE YARD (SOUTH):	20'	100'
MINIMUM REAR YARD:	100'	1,024'
MINIMUM BUFFER (NORTH):	5'	50'
MINIMUM BUFFER (EAST):	10'	25'
MINIMUM BUFFER (SOUTH):	5'	5'-10' VARIABLE
MINIMUM BUFFER (WEST):	5'	108'



**DIPrete Engineering**  
Two Stafford Court, Cranston, RI 02920  
Tel: 401-943-1000 Fax: 401-464-6006 www.diprete-eng.com

**KEVIN DEMERS**  
REGISTERED PROFESSIONAL ENGINEER CIVIL

This regulatory submission set shall not be used for construction purposes unless stamped 'Issued for Construction' and signed by a DIPrete Engineering representative.

The contractor is responsible for all of the means, methods, safety, precautions and requirements, and OSHA compliance in the implementation of this plan and design.

**Site Development Plan**  
**Natick Avenue Solar**  
Assessor's Plat 22-3 Lots 108 & 119  
Cranston, Rhode Island

**Natick Solar, LLC**  
17 Metro Center Blvd #2007, Warwick, Rhode Island 02886  
Tel: 401-943-2800

Drawn By: SEK  
Design By: SEK

Drawn By: SEK  
Design By: SEK

SHEET **6** OF 13

Boston • Providence • Newport